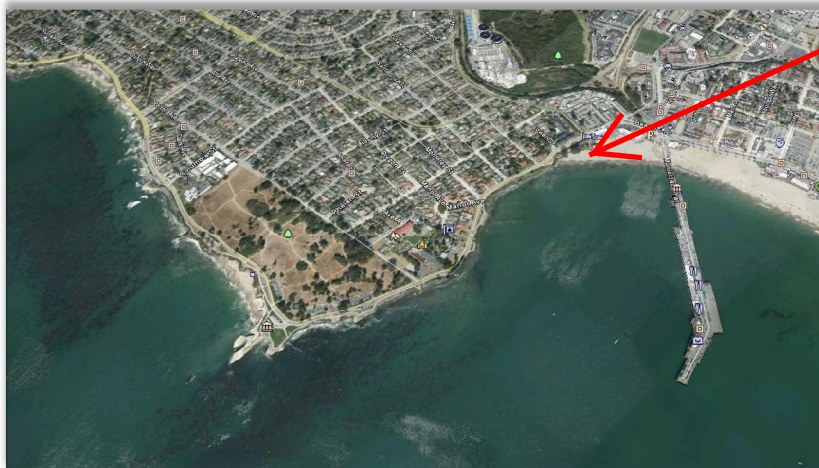
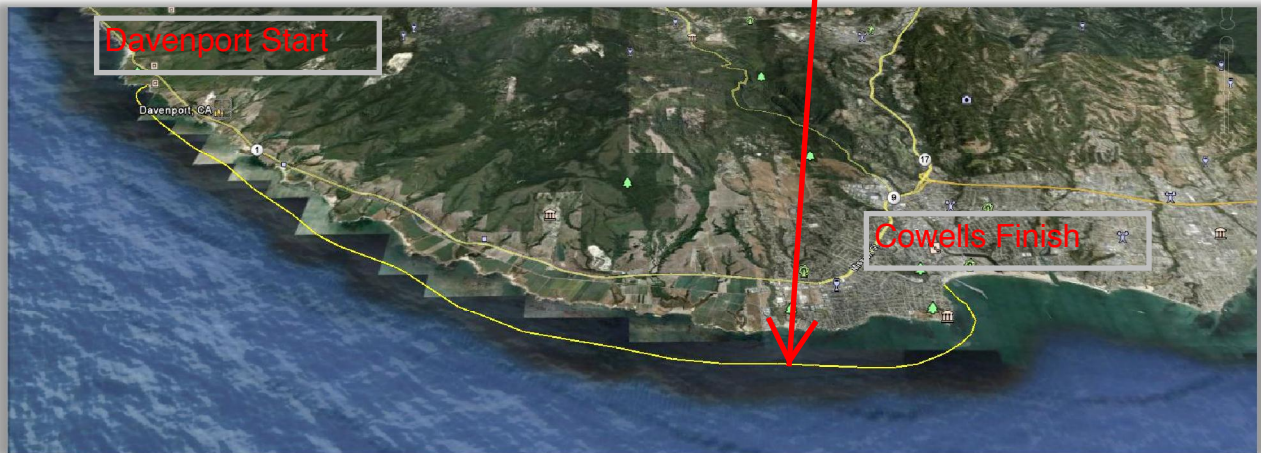


DAVENPORT DOWNWINDER COURSE INFORMATION



Race Start is on Davenport Beach located off Davenport Landing Road (Less than 1 mile north of the town of Davenport.) Race day registration is on the beach. Parking is limited so plan to arrive early. Race Starts at 1:30 PM.

Course:
*Water Temps in low 50's (wetsuits advised)
*Winds forecast 20+ KNTS (leashes advised)
Paddle with a partner and paddle within your limits.



Finish is at the west end of Cowell's Beach (west side of wharf) Parking is available at beach meters, Cowell's Beach Surf Shop and on the Streets above the Dream Inn.